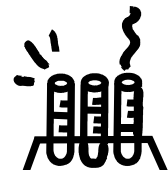


# THE RESEARCH COMMUNIQUÉ



Summer 2009

August 19, 2009

News from the Office of the Associate Dean for Research and Faculty Affairs (ADRFA): • Division of Laboratory Animal Medicine (DLAM)/Laboratory Animal Care and Use Committee (LACUC) • Division of Research Services • Flow Cytometry Facility • Grants and Contracts • Office of Clinical Research Development (OCRD)/Springfield Committee for Research Involving Human Subjects (SCRIHS) • Office of Technology Transfer (OTT) • Radiological Control/Radiological Control Committee (RCC) • Research Committees: Central Research Committee (CRC) and Research Policy Committee (RPC) • Research Imaging Facility (RIF) • Statistics and Research Consulting • Visual Communications • and more

## ► SCRIHS QUARTERLY TIP

When conducting clinical research, a wide variety of circumstances exist that could result in deviation from the research protocol. These events are reported to SCRIHS using the Protocol Deviation Report form. The form is located on the SCRIHS Web page, which can be found at <http://www.siumed.edu/adrfa/scrihs1.html>. When reporting protocol deviations to SCRIHS, always include the following elements: subject ID number and initials, reason the deviation occurred, outcome, and an explanation of whether or not there was harm to any subjects and how future occurrences will be prevented. Completing these reports provides an opportunity for a research team to self assess their processes for adhering to a protocol, possibly presenting ways of enhancing current operations. For questions or assistance completing Protocol Deviation Reports, please feel free to contact the SCRIHS staff at 545-7602.

## ► TECH TRANSFER CARTOON



"Many regional and statewide programs exist to help turn your innovative ideas into successful businesses. Talk to the OTT for guidance or more information."

## ► CONGRATULATIONS TO THESE GRANT RECIPIENTS

The following are the 2010 CRC grant recipients: **Amy Arai, Ph.D.**, Pharmacology, *Identification of Auxiliary AMPA Receptor Subunits*; **Brent Bany, Ph.D.**, Physiology, *Function of the Basic Helix-Loop-Helix Transcription Factor Hand2 in the Mouse Ovary*; **Sangita Basnet, M.D.**, Pediatrics, *Early Initiation of Non-Invasive Positive Pressure Ventilation in the Management of Children with Status Asthmaticus: A Prospective Randomized Trial*; **Randolph Elble, PhD.**, Cancer Institute, *Does the Loss of hCLCA2 Promote Breast Cancer?*; **Buffy Ellsworth, Ph.D.**, Physiology, *The Role of the Forkhead Transcription Factors, FOXO1 and FOXM1, in Pituitary Gland Development*; **Kanako Hayashi, Ph.D.**, Physiology, *Role of WNT7A in Ovarian Cancer Metastasis*; **Michael Schneider, M.D.**, Pediatrics, *Evaluation of Transgenic Mice with a Targeted Deletion of DNASE1-like 3*; **Cristian Speil, M.D.**, Medicine, *Activity of Antibiotics as Single Agents and in Combination Against Acinetobacter Baumannii in Suspension and Biofilm*; **Donald Torry, Ph.D.**, MMICB, *Regulation of Gene Expression in Trans-Differentiated Human Decidual NK Cells*; and **Gayle Woodson, M.D.**, Surgery, *Brainstem Response to Laryngeal Nerve Injury*.

The following are the 2010 CRC Near-Miss grant recipients: **Kathy Bottum, M.D., Ph.D.**, Medicine, *Mechanisms of Circadian Clock-Regulated Excitotoxic Resistance*; **Prema Narayan, Ph.D.**, Physiology, *Proteomic Analysis of Sperm from Mice with Constitutive LHR Activity*; and **Sophia Ran, Ph.D.**, MMICB, *NF-kB Mediated Induction of VEGFR-3 and New Lymphatic Vessels in Breast Cancer*.

The following are recent external grant recipients: **Christopher Chambers, Ph.D.**, Surgery, *Establishing Tumor Stem Cell Dormancy in Bone by BMP7*, William E. McElroy Charitable Foundation; **Brian Derby, M.D.**, Surgery, *EGR-1: Expression in a Rabbit Flexor Tendon Scar Model*, Plastic Surgery Education Foundation; **Kai Mergele, M.D.**, Surgery, *Notch Signaling in Tendon Surgery and Engineering*, Plastic Surgery Education Foundation; **Louis Premkumar, Ph.D.**, Pharmacology, *Novel Approach for Chronic Pain Treatment Using Resiniferatoxin*, NIH; **Krishna Rao, M.D., Ph.D.**, Medicine, *Therapeutic Implication of Rab25 Loss in Breast Cancer*, William E. McElroy Charitable Foundation; **Laura Rogers, M.D.**, Medicine, *Enhancing Physical Activity after Breast Cancer Diagnosis: Randomized Trial*, NIH; and **Tracey Smith**, Family and Community Medicine, *Community Action Grant-Go Ahead and Choose Program*, American Heart Association.

## ► IMPORTANT UPDATE— NEW DUNS NUMBER

SIU-SOM's DUNS number (the federal business identifier) was changed to 038415006. Please begin using this new number immediately on all grant application forms/contracts or when otherwise requested. For questions, contact **Pam Helfert**, ADRFA, at 545-4549 or [phelfert@siumed.edu](mailto:phelfert@siumed.edu).

## ► CLINICAL STUDY COORDINATORS' NETWORK (CSCN) MEETINGS

The next meeting of the CSCN will be Thursday, October 8 from noon to 1 p.m. in the Lincoln Conference Room. Please mark your calendars and feel free to bring your lunch (dessert/beverages will be served). At the last meeting, **Alisha Mirabile**, ADRFA, discussed the new federal GINA requirements and SCRIHS' new templates. To help with continuing education requirements, attendees will receive "One Conference Hour." If you coordinate clinical research, please join the October 8 meeting to share ideas and discuss best research practices. For details, contact **Susan Klug**, Cancer Institute, at [sklug@siumed.edu](mailto:sklug@siumed.edu), or **Barbara Lokaitis**, Neurology, at [blokaitis@siumed.edu](mailto:blokaitis@siumed.edu).

To:

## Calendar of Events

### September

- 28** Concept Development Award FY 2010 Cycle A application opening date, 8 a.m., **Kristy Owen**, OTT, 545-6397

### October

- 5** New NIH R01 grant submission deadline, **Pam Helfert**, ADRFA, 545-4549
- 12** Concept Development Award FY 2010 Cycle A application closing date, 4:30 p.m., **Kristy Owen**, 545-6397
- 16** New NIH R03 and R21 grant submission deadline, **Pam Helfert**, 545-4549

### ► RESEARCH SYMPOSIUM

The SimmonsCooper Cancer Institute Research Symposium will be held at 8 a.m. on Saturday, October 17, 2009 in the South Auditorium. Registration is free, but required. Registration and abstract submission must be completed by October 1, 2009. Contact **Theresa Casson**, Cancer Institute, at 545-9548 or [tcasson@siumed.edu](mailto:tcasson@siumed.edu) for details.

### ► LACUC REMINDER

Always make sure to use the latest version of the LACUC protocol forms, as well as the various amendment forms. These are updated frequently and you must use the most recent version. The forms can be downloaded from the LACUC Web page, found at <http://www.siumed.edu/adrfalacmeetings.html>. Also available on the page is a list of due dates for protocol submission prior to meetings and submission instructions, including number of forms needed and other information.

### ► 19<sup>TH</sup> ANNUAL TRAINEE RESEARCH SYMPOSIUM HIGHLIGHTS

The 19<sup>th</sup> annual trainee research symposium was held on Wednesday, May 13, 2009. Resident awardees were: 1<sup>st</sup> place, **Anushree Agarwal, M.D.**, Medicine; 2<sup>nd</sup> place, **Kyle Siewart, M.D.**, Surgery; and 3<sup>rd</sup> place, **Nishith Singh, M.D.**, Medicine. Medical student awardees were: 1<sup>st</sup> place, **Lisa Shah, MSII**, and 2<sup>nd</sup> place, **Deena Chihade, MSII**. Graduate student awardees were: 1<sup>st</sup> place, **Mohit Sachdeva**, MMICB; 2<sup>nd</sup> place, **Michael Flister**, MMICB; and 3<sup>rd</sup> place, **Vijay Walia**, Pharmacology. Thank you to the participants and the judges who took time to assist with the symposium.

### ► NEW CONSENT FORM TEMPLATES FOR TISSUE BANKING AND SPECIMEN COLLECTION

New Tissue Banking Consent Form and Specimen Collection Consent Form templates are being finalized and will be available on the SCRIHS Web page soon (an email notice will be sent out once the templates are available). Included in the templates is new language regarding genetic testing, added to meet the new federal regulations regarding the Genetic Information Nondiscrimination Act (GINA) that was recently passed into law. "GINA is a federal law that prohibits discrimination in health coverage and employment based on genetic information. GINA, together with already existing nondiscrimination provisions of the Health Insurance Portability and Accountability Act (HIPAA), generally prohibits health insurers or health plan administrators from requesting or requiring genetic information of an individual or an individual's family members, or using such information for decisions regarding coverage, rates, or preexisting conditions. GINA also prohibits employers from using genetic information for hiring, firing, or promotion decisions, and for any decisions regarding terms of employment." (taken from <http://www.hhs.gov/ohrp/humansubjects/guidance/gina.pdf>)

### ► DIVISION OF RESEARCH SERVICES— COMPUTER SUPPORT UPDATE

To better serve the computer needs of the ADRFA, Information Resources (IR) has created a new email address to receive technical requests that were previously addressed to Research Services. Please send these requests to [irtechsupport@siumed.edu](mailto:irtechsupport@siumed.edu). To ensure that the requests are addressed in a timely manner, this email is received by multiple technicians. The question goes into the IR work queue and is handled by the next available technician. Thank you for your cooperation. For more information about Research Services, visit <http://www.siumed.edu/adrfarservices.html>.

### ► OHRP/FDA IRB REGULATIONS

SCRIHS has received several inquiries regarding the new Office of Human Research Protections (OHRP)/FDA IRB registration regulations. SCRIHS is in compliance with the regulations. Please direct any inquiries to the SCRIHS staff at 545-7602. For the complete OHRP regulations regarding the new registration process, please visit <http://edocket.access.gpo.gov/2009/E9-588.htm>.

### ► REDESIGNED CONCEPT DEVELOPMENT AWARD

The Concept Development Award has been revised to include updated forms, new submission requirements, and several other changes. The disclosure deadline for FY 2010 Cycle A of the award is Monday, September 14, 2009. For details, visit <http://www.siumed.edu/adrfacdaward.html>.

### ► NEW EMAIL ADDRESS FOR CLINICAL TRIAL CONTRACTING

All correspondence related to clinical trial contracts, Confidential Disclosure Agreements (CDAs), Clinical Trial Agreements (CTAs), etc. should be addressed to a new email alias. Please begin using [researchcontracts@siumed.edu](mailto:researchcontracts@siumed.edu) to contact **Erin Campbell**, OCRD, and **Carol Conover**, ADRFA, instead of their individual email addresses. The OCRD anticipates this change will improve communication and enhance services. This email address can be used by study personnel and should be given to study sponsors and their CROs.

### ► NIH ANNOUNCES NEW DRUG DEVELOPMENT PROGRAM

NIH announced that it is forming "an integrated drug development pipeline within the NIH... specifically intended to stimulate research collaborations with academic scientists working on rare illnesses." The \$24 million program jumpstarts the trans-NIH initiative Therapeutics for Rare and Neglected Diseases program (TRND). The NIH Office of Rare Diseases Research (ORDR) will oversee the program, and TRND's laboratory operations will be administered by the National Human Genome Research Institute (NHGRI). For details, visit <http://www.nih.gov/news/health/may2009/nhgri-20.htm>.

### ► DLAM MEMBER RETIRES AFTER 30 YEARS

**Judy Thompson**, a DLAM Laboratory Helper, is retiring after 30 years of dedicated service. Judy joined SIU-SOM on May 29, 1979. She has been a very devoted and hard working employee. She has seen DLAM go through many changes, both in staffing and development. Judy has been an anchor to the team for many years, always working hard, pushing herself and everyone around her to do whatever it takes to complete the job. Judy's retirement will be recognized on Wednesday, August 26, 2009 from 2 to 4 p.m. in the Pearson Museum. Please stop by to thank her and wish her all the best. Her smiling face, dedication and hard work will be greatly missed by the entire DLAM team.

► Check out The Research Communiqué online at <http://www.siumed.edu/adrfar>.



Produced by the Office of Technology Transfer  
 Kristy Owen, Technology Transfer Specialist  
 P.O. Box 19616 • Springfield, IL 62794-9616  
 Email: [kowen@siumed.edu](mailto:kowen@siumed.edu)  
 Phone: (217) 545-6397 fax: (217) 545-7873  
 Next Issue: November 18, 2009