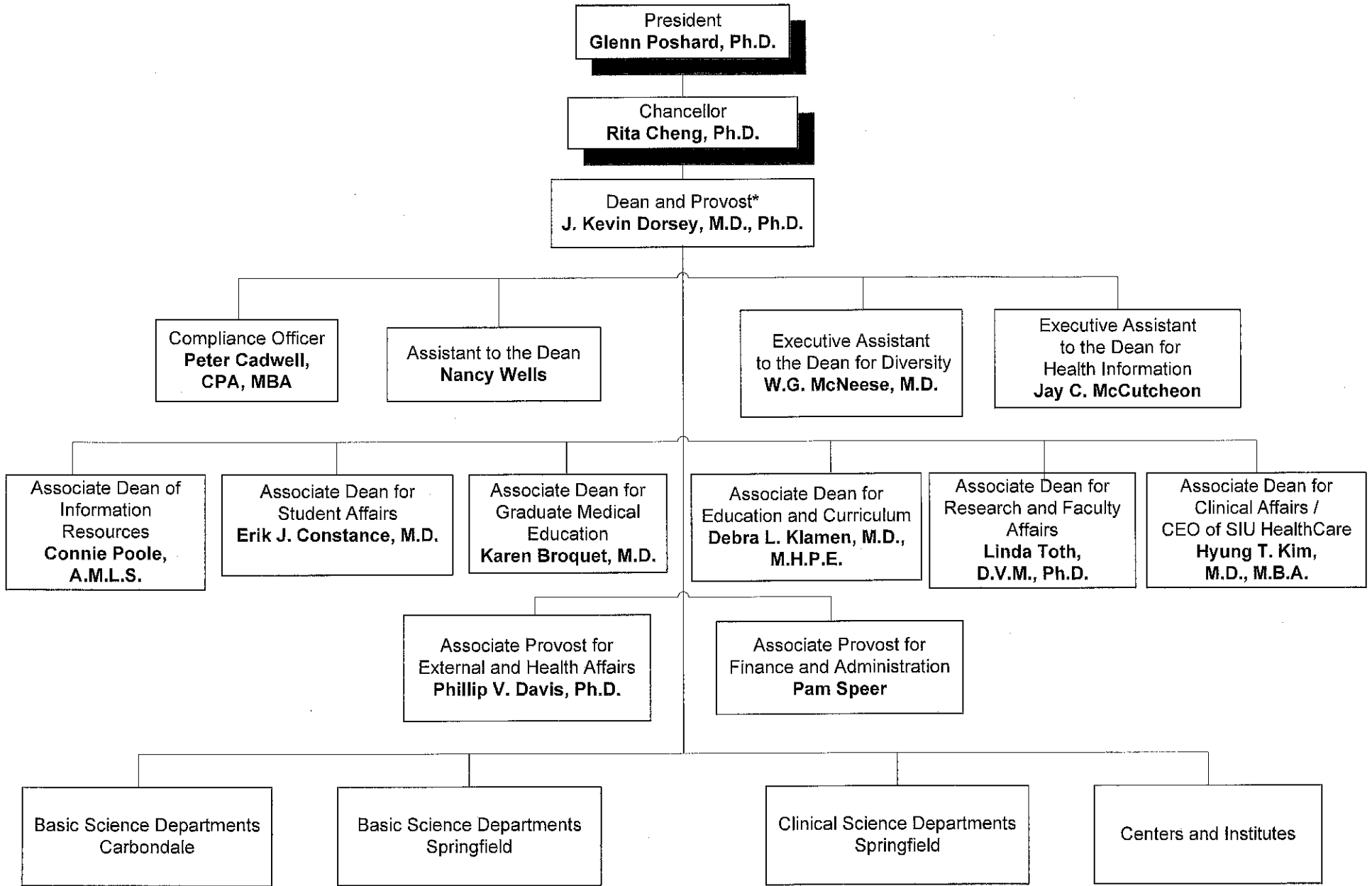


SOUTHERN ILLINOIS UNIVERSITY
SCHOOL OF MEDICINE



*Unshadowed positions report
to the Dean and Provost

8/31/11
Orgchart 2011

SOUTHERN ILLINOIS UNIVERSITY
SCHOOL OF MEDICINE

DEAN AND PROVOST
J. Kevin Dorsey, M.D., Ph.D.

BASIC SCIENCE
DEPARTMENTS/
CARBONDALE

-Anatomy
Richard Clough, Ph.D.
-Biochemistry and Molecular
Biology
Ramesh Gupta, Ph.D.
-Physiology
Dale Buchanan (Buck) Hales,
Ph.D.
-Medical Education/
MEDPREP
Harold Bardo, Ph.D.

BASIC SCIENCE
DEPARTMENTS/
SPRINGFIELD

-Information and Communication Sciences
Connie Poole
-Medical Education
Debra L. Klamen, M.D., M.H.P.E.
-Medical Humanities
Ross Silverman, J.D.
-Medical Microbiology/Immunology and
Cell Biology
Morris D. Cooper, Ph.D.
-Pharmacology
Carl L. Faingold, Ph.D.

CLINICAL SCIENCE
DEPARTMENTS/
SPRINGFIELD

-Anesthesiology/Reginald Bulkley, M.D.
-Family and Community Medicine
Jerry E. Kruse, M.D.
-Internal Medicine/David Steward, M.D.
-Neurology/Rodger J. Elble, M.D., Ph.D.
-Obstetrics and Gynecology/J. Ricardo
Loret de Mola, M.D.
-Pathology/Brian Moore, M.D./Sanjai Nagendra, M.D.
-Pediatrics/Mark Puczynski M.D.
-Psychiatry/Stephen Soltys, M.D.
-Radiology/Andrew Sherrick, M.D.
-Surgery/Gary Dunnington, M.D.

CENTERS AND
INSTITUTES

-Cancer Institute
Thomas Robbins, M.D.
-Center for Alzheimer Disease and
Related Disorders
Tom Ala, M.D.