

Residency Programs 2008 - 2010

SIU School of Medicine



Southern
Illinois University
School of Medicine

Residency Programs

J. Kevin Dorsey, M.D., Ph.D.

Dean and Provost, Professor of Medicine

Karen Broquet, M.D.

Associate Dean for Graduate Medical Education

Professor of Medicine/Psychiatry

**Total residency and fellowship positions:
226 in Springfield
53 in affiliated sites**

Southern Illinois University School of Medicine was established in 1970 to help meet the health care needs of the people of central and southern Illinois. For more than 35 years, our community-based medical school has emphasized teaching and achieved national recognition as an innovator in medical education.

SIU sponsors 14 residency programs. Our programs in Springfield offer the best of both possible worlds – considerable medical sophistication in a small-city atmosphere. We provide an excellent academic base for your training in a pleasant and affordable community. Outreach activities and affiliations extend the School's involvement to many other central and southern Illinois communities.

Choosing a residency is not easy. We encourage you to visit us and see our programs and facilities firsthand. We believe you'll be convinced of our excellence. We're proud that we've trained an accomplished group of more than 1,700 physicians.

SIU's residency and fellowship programs offer an excellent balance between primary care and specialty care training. All of our training programs provide the preparation you need in scientific, clinical and humanistic aspects of medicine. Each provides an environment which nurtures inquiry into the science of medicine and clinical settings where you can apply your knowledge to individual patient encounters.

Because the job market for physicians is strong in central and southern Illinois, there are many professional opportunities in the region for all our resident graduates. Every year some graduates choose to enter academic careers, including here at SIU. Our residents also have excellent success in obtaining highly coveted academic fellowship positions throughout the nation.

Inpatient and outpatient rotations take place in state of the art facilities. Training programs in Springfield are supported by our two large affiliated hospitals – Memorial Medical Center (562 beds) and St. John's Hospital (731 beds). With combined admissions of more than 42,000 and more than 120,000 emergency room visits, these teaching hospitals are leading tertiary care centers in the Midwest. Advanced technology is readily available and almost every medical and surgical procedure is provided.

Along with the medical school, Memorial and St. John's comprise an expanding downstate Illinois academic medical center. In 1999, the three teamed up to establish a Level 1 trauma center, the Southern Illinois Trauma Center. Today, the two hospitals and the School of Medicine are working together to develop and implement coordinated electronic systems for medical records as well as management of resident duty hours and evaluations.

The medical staffs of both of our affiliated hospitals serve a large referral network that brings patients to Springfield from throughout central and southern Illinois. Drawing on a large referral area that includes contiguous states, the patient populations are well-balanced and diverse, coming from both metropolitan and rural settings. This mix provides varied learning opportunities to help you develop a range of professional skills.

SIU School of Medicine has helped set standards for medical education and has pioneered the use of standardized patients, case-based learning and clinical skills assessment. Many of our faculty are national leaders in medical education. The active involvement of faculty in clinical teaching is a major asset for our residents.



Resident trainees work with physician role models from academic and private practice backgrounds. Experiences in ambulatory care clinics provide a strong complement to those in hospital-based settings. The School has more than 295 full-time faculty members as well as more than 900 part-time and volunteer faculty members. More than 200 full-time physicians supervise more than 360,000 clinic visits per year in our primary and specialty care clinics as well as approximately 122,000 hospital visits.

Our research covers a wide range of basic and clinical sciences. More than 100 laboratories in Carbondale and Springfield support a wide range of medical and basic science research and clinical trials, and represent more than \$23 million in funding. The Springfield Combined Laboratory (SCLF) is a five-story brick research building with controlled environmental areas, immunology and virology laboratories, a biomedical research imaging suite and animal research facilities. With the recent expansion of the SCLF, the School is able to expand its research efforts in molecular biology, increase focus on the increasingly important research areas of genetics and genomic medicine, and continue work on infectious disease and immune function, particularly as related to emerging infectious diseases and bioterrorism.

Other resources available to support medical education include:

- **The SIU Medical Library** houses more than 164,000 volumes, 1,189 current periodicals, 3,400 audiovisual programs and 5,000 volumes in a special historical collection. The library offers a complete range of automated searching, both on-site and from Internet-enabled workstations. Loanable technology (laptops, projectors and digital cameras) also are available.
www.siumed.edu/lib/

- **The Departments of Medical Microbiology, Immunology and Cell Biology and of Pharmacology** have extensive laboratory space and advanced equipment. Faculty, researchers and a number of residents are engaged in independent and collaborative projects. A close working relationship with the clinical staff provides a scientist-physician team approach to research.
- **The Department of Medical Humanities** assists in integrating clinical skills with those of the social and behavioral sciences and the humanities. Its full-time faculty offers expertise in law, ethics, philosophy, psychosocial care, health policy and medical history.
- **The Department of Medical Education** is internationally known as a leader in curriculum design, delivery and evaluation. Faculty can assist in shaping your educational activities and developing your teaching skills. **The Division of Statistics and Research Consulting** helps develop research designs and data analysis strategies and assists with interpreting results.
- **The Office of Continuing Medical Education** provides and designates AMA Category 1 credit for an extensive schedule of conferences and symposia. Most local conferences are free of charge to residents.
www.siumed.edu/cme/
- **The SimmonsCooper Cancer Institute at SIU** offers state-of-the-art treatment for patients in central and southern Illinois as well as facilities for cancer research and physician and public education. In the summer of 2008, it consolidated services in a new three-story, \$21.5 million facility in Springfield, facilitating the multi-disciplinary approach that is the hallmark of the Institute.
www.siumed.edu/cancer/
- **St. John's Children's Hospital** combines the faculty resources of Southern Illinois University School of Medicine with the pediatric facilities and services of St. John's Hospital. It is accredited by the National Association of Children's Hospitals and Related Institutions. The Children's Hospital Web site is www.sjchildrens.org.



- An area in the city for a **Medical District**, which includes the medical school, has been established to advance activities in research and patient care. The Mid-Illinois Medical District will develop facilities and undertake projects to advance the city's position as a medical center of excellence. www.midillinoismedicaldistrict.org
- The **Southern Illinois Trauma Center** (SITC) is a cooperative effort of Memorial Medical Center, SIU's Department of Surgery and St. John's Hospital. SITC is treating an average of 1,000 injured patients each year, who come from Springfield and the 18-county service area.
- The **Surgical Skills and Research Lab** is one of only a handful of centers across the country designed specifically for training surgical residents. It supplements the traditional training SIU surgery residents receive when they learn procedures in the operating room, working alongside full-time faculty and the community's surgeons.
- To help **Illinois communities seeking physicians** and residents looking at practice locations, the School offers an Illinois placement service and maintains a practice locations Web site. www.siumed.edu/practice_ops/

We recognize that quality of life as well as quality of training are vitally important. Resident salaries are above the Council of Teaching Hospitals' averages for Midwest programs. The affiliated hospitals provide professional liability coverage, as well as life and health insurance, with an option to add family members.

Vacation and educational leave total four weeks each year. Additional amenities include free, safe parking, free meals while on call, and exercise rooms for the use of all house staff.

Although participating institutions are large enough to offer the best in care, each resident is known individually. All residents are members of the House Staff Association (HSA), which proposes improvements and advocates on behalf of all residents. A peer elected representative from each program serves on the HSA's Board of Directors.

International medical graduates who are not U.S. citizens or permanent residents are accepted only through a J-1 visa sponsorship.

Springfield is the capital of Illinois and is a delightful place to live with a diverse cultural, economic and political life, and an historical heritage highlighted by its most famous citizen, Abraham Lincoln. The area's reasonable cost of living allows more spending power than other areas of the country. Springfield offers a variety of cultural and recreational opportunities without the congestion of larger metropolitan areas. Housing is economical and there are many opportunities to purchase or rent a home. Several banking institutions offer home loans to residents that require no down payment. Our affiliated programs in family medicine are located in equally pleasant and affordable Illinois communities.

Please make it a point to visit our Residency Affairs Web site at www.siumed.edu/resaffairs for additional information on all of our training programs, our hospitals, our policies and the Springfield area.



Residencies and Fellowships

(Including program directors)

Dermatology – 4 years

Lucinda S. Buescher, M.D., 217-545-5465

Web site: www.siumed.edu/medicine/derm/

Mohs Micrographic Surgery and Cutaneous Oncology Fellowship – 1 year

Robert A. Buzzell, M.D., 217-545-5465

Family Medicine – 3 years

Carbondale: Penelope K. Tippy, M.D., 618-536-6621 ext. 221

Web site: www.siumed.edu/cfpc

Carbondale Sports Medicine Fellowship – 1 year

Scott Schonewolf, D.O., 618-536-6621, ext. 221

Decatur: John G. Bradley, M.D., 217-872-0850

Web site: www.siumed.edu/dfpc

Quincy: Thomas H. Miller, M.D., 217-224-8957

Web site: www.quincyfp.org

Quincy Sports Medicine Fellowship – 1 year

James M. Daniels, M.D., 217-224-9484, ext. 5772

Springfield: Janet R. Albers, M.D., 217-757-8140

Web site: www.siumed.edu/sfm

Internal Medicine – Categorical - 3 years; Preliminary – 1 year

Andrew J. Varney, M.D., 217-545-0193

Web site: www.siumed.edu/medicine

Endocrinology Fellowship – 2 years (minimum)

Romesh K. Khardori, M.D., Ph.D., 217-545-0166

Web site: www.siumed.edu/medicine/endo/fellowship.htm

Infectious Diseases Fellowship – 2 years

Nancy M. Khardori, M.D., Ph.D., 217-545-9148

Web site: www.siumed.edu/medicine/infec/education/fellowship.htm

Pulmonary Fellowship – 2 years

Joseph Q. Henkle, M.D., 217-545-0187

Web site: www.siumed.edu/medicine/pulm/education/fellowship.htm

Medicine/Psychiatry – 5 years

David Resch, M.D., 217-545-0193

Web site: www.siumed.edu/medpsy/

Neurology – 4 years

Rodger J. Elble, M.D., Ph.D., 217-545-0168

Web site: www.siumed.edu/neuro/

Clinical Neurophysiology

and Epilepsy Fellowship – 1-2 years

Dean K. Naritoku, M.D., 217-545-0168

Web site: www.siumed.edu/neuro/

Obstetrics/Gynecology – 4 years

Erica E. Nelson, M.D., 217-545-6498

Web site: www.siumed.edu/ob/

Pediatrics – 3 years

Michelle Miner, M.D., 217-545-7827

Web site: www.siumed.edu/peds/

Psychiatry – 4 years

Jeffrey I. Bennett, M.D., 217-545-7627

Web site: www.siumed.edu/psych/

Child Psychiatry Fellowship – 2 years

Ayame Takahashi, M.D., 217-545-7644

Web site: www.siumed.edu/psych/html/child_psychiatry_fellowship.html

Diagnostic Radiology – 5 years

John B. Becker, M.D., 217-757-2387

Web site: www.siumed.edu/radiology/

Surgical Programs

General Surgery – 5 years

Edward J. Alfrey, M.D., 217-545-4401

Web site: www.siumed.edu/surgery/residency.html

Vascular Surgery Fellowship – 2 years

Kim J. Hodgson, M.D., 217-545-8856

Web site: www.siumed.edu/surgery/vascular/

Colon and Rectal Surgery Fellowship - 1 year

Jan Rakinic, M.D., 217/545-7230

Orthopaedic/Rehabilitation – 5 years

Keith Gabriel, M.D., Acting Program Director, 217-545-6155

Web site: www.siumed.edu/surgery/orthopaedics/

Spine Surgery Fellowship – 1 year

Per Freitag, M.D., Ph.D., 217-545-6155

Web site: www.siumed.edu/surgery/orthopaedics/spine_fellowship.html

Otolaryngology – 5 years

James P. Malone, M.D., 217-545-4777

Web site: www.siumed.edu/surgery/otolaryngology/index.html

Head and Neck Oncology Fellowship – 2 years

K. Thomas Robbins, M.D., 217-545-4777

Web site: www.siumed.edu/surgery/otolaryngology/hanot.html

Plastic/Reconstructive Surgery – 6 years

Reuben A. Bueno, Jr., M.D., 217-545-6112

Web site: www.siumed.edu/surgery/plastics

Urology – 5 years

Patrick H. McKenna, M.D., 217-545-3362

Web site: www.siumed.edu/surgery/urology



Memorial Medical Center

Edgar J. Curtis, President and Chief Executive Officer

Douglas L. Rahn, Sr. Vice President and Chief Operating Officer

Mark Weaver, M.D., Chief Medical Officer

Number of beds: 562 licensed beds

Admissions: 22,482 (FY07)

Emergency room visits: 60,190 (FY07)

Operating as a private, not-for-profit corporation, Memorial Medical Center (MMC), founded in 1897, offers comprehensive inpatient, outpatient and home health services to the residents of central and southern Illinois with a mission to improve the health of the people and communities we serve.

MMC serves as a site for a Level I trauma, a joint effort with SIU and St. John's Hospital that alternates hospitals annually. More than 60,000 patients were treated in Memorial's Emergency Department in FY07. Memorial's Chest Pain Center begins treatment and diagnosis of chest pain within 30 seconds of the patient's arrival. The dedicated Stroke Response Teams have access to advanced digital imaging capabilities and are staffed to provide instant, expert analysis.

Tertiary care available at Memorial includes a variety of specialized services. The Regional Cancer Center provides comprehensive cancer care, including the latest research protocols available through the Community Clinical Oncology Program of the National Cancer Institute.. MMC's Regional Burn Center, the only dedicated burn center in downstate Illinois, is equipped with the latest technologies and facilities. Memorial Medical Center's Orthopaedic Institute offers state-of-the-art interdisciplinary care for bone and joint disorders.

The Center for Neuromuscular Sciences features a rehab facility with five-fold CARF accreditation for the inpatient rehabilitation of stroke, specialized brain injury and spinal cord rehabilitation, one of only four healthcare facilities in the world to earn this distinction. Memorial's Heart and Vascular Institute has a full range of diagnostic treatment, rehabilitative and respiratory therapy services.

Other MHS affiliates include Memorial Home Services, Abraham Lincoln Memorial Hospital in Lincoln, Taylorville Memorial Hospital, Mental Health Centers of Central Illinois and Healthcare Network Associates, a network of primary care physicians with clinics in Springfield, Chatham, Jacksonville, Petersburg and Lincoln. The health system Web site is www.memorialmedical.com.

St. John's Hospital

Robert Ritz, Chief Executive Officer

Craig Backs, M.D., Chief Medical Director

Number of beds: 731 licensed beds

Admissions: 19,988 (FY07)

Emergency department visits: 60,314 (FY07)

St. John's Hospital was founded in 1875 by the Hospital Sisters of the Third Order of St. Francis and is an affiliate of the Hospital Sisters Health System. As a regional referral center, it provides tertiary care for the entire central and southern Illinois area.

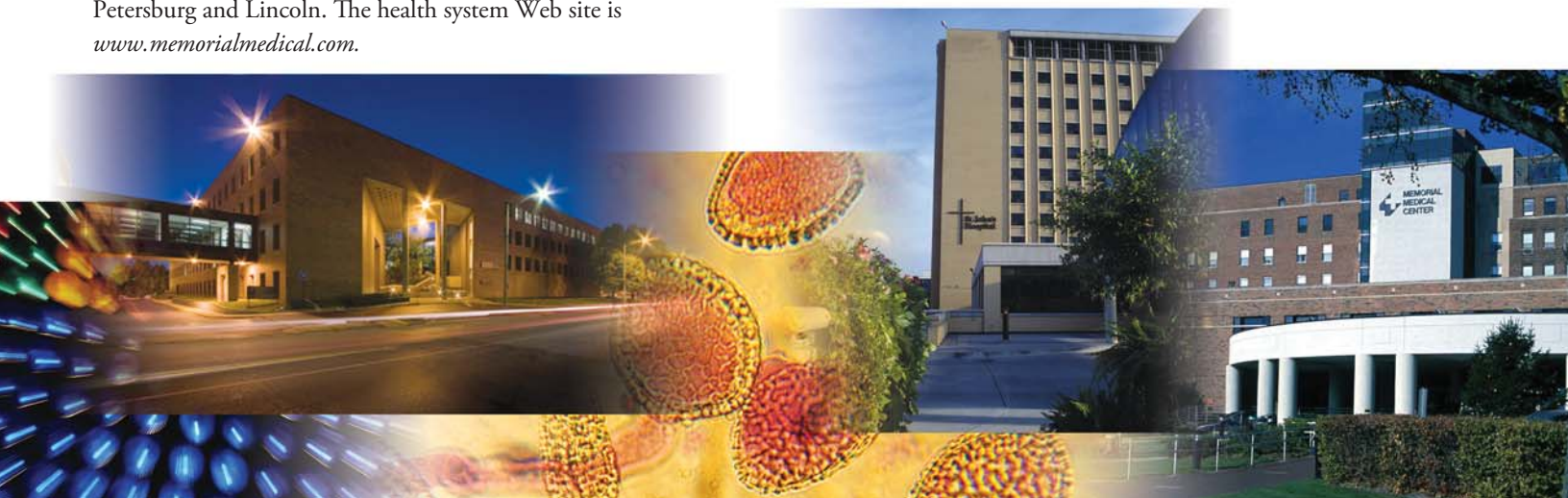
St. John's Children's Hospital, a partnership with SIU School of Medicine, provides neonatal intensive care, a Level III Perinatal Center, and pediatric services including pediatric rehabilitation. The center includes an outpatient fetal evaluation laboratory coordinated by SIU and an antenatal unit. The Level III Neonatal Intensive Care Unit serves 35 counties in Illinois.

Other special care areas include an adult intensive care unit, a bone and joint program, and comprehensive cancer care. St. John's also offers adult day care, home health services, and inpatient and home hospice care. About 22,470 surgical procedures are performed each year in the hospital's 25 surgical suites; more than 500 of these are open heart surgery procedures.

St. John's is recognized as a leader in cardiac services, having the largest heart program in Illinois which includes the Prairie Heart Institute. Approximately 10,000 procedures are performed every year in the seven cardiac catheterization labs, including diagnostic catheterizations and nonsurgical treatments. The cardiovascular department offers a range of sophisticated diagnostic services for adult and pediatric cardiology and vascular patients. Individualized rehabilitation services are available for intervention or post-operative fitness.

The Level 1 Southern Illinois Trauma Center is a partnership between Memorial Medical Center, St. John's and SIU School of Medicine. The two hospitals alternate responsibility for the trauma center annually. An air/ground transport program is used for critically ill patients.

As St. John's Hospital grows and moves into the future, administration and employees remain committed to the Hospital Sisters' philosophy — All people are created by God and have an intrinsic dignity and value. Their Web site is www.st-johns.org/



Springfield, Illinois

Population: approximately 113,000

Geographic area: 33.4 square miles

Located in the rich agricultural heart of Illinois, Springfield combines the small town elements of a friendly, safe environment with the metropolitan advantages of cultural and recreational opportunities. The seat of state government, it also is a downstate center for conventions and tourism, retail and wholesale operations, and agricultural production. Its consumer market extends into 10 counties, serving more than 500,000 people.

Springfield has a rich history, much of it tied to its most famous citizen, Abraham Lincoln, our 16th president. Historic sites include the Lincoln Home National Historic Site, the Lincoln Tomb and Lincoln's New Salem, the 1830s pioneer village where Lincoln lived for six years. The Old State Capitol is located in the center of the city. Also downtown is the recently completed Abraham Lincoln Presidential Library and Museum, home to the state's world-renowned Lincoln historical collection.

Cultural opportunities abound. The 2,017-seat Sangamon Auditorium at the University of Illinois at Springfield (UIS) offers a full range of music, theater and dance performances. It is also home to the award-winning Illinois Symphony Orchestra and Chorus and the Springfield Ballet Company. Theater lovers also can take advantage of productions by the Springfield Theatre Centre and two summer programs — the Muni musical series and Theatre in the Park at Lincoln's New Salem Historic Site. The Springfield Municipal Band and the Thomas Rees Memorial Carillon both offer evening entertainment in the summer. The Hoogland Center for the Arts in downtown Springfield is a 80,000 square foot, four-story building which houses four performance spaces and other public areas.

The Springfield Art Association, housed in the restored, historic Edwards Place, offers an active schedule of shows and art classes. The Springfield Area Arts Council promotes community events in the visual, literary and performing arts. Countless other guest lectures, exhibits, performances and programs are available through the Illinois State Museum, the Prairie Capital Convention Center, local colleges and universities, and community groups.

Outdoor activities include the Old Capitol Art Fair in May, which attracts artists from around the country. In June, the International Carillon Festival features musicians from around the world. Summer also is the time for county fairs as well as the Illinois State Fair and the LPGA State Farm Classic. Winter brings First Night Springfield, a New Year's Eve celebration that features arts and entertainment for the family.

Recreational opportunities are many and varied. Springfield offers hiking, biking, golf, tennis, swimming and cross-country skiing. Bicyclists and inline skaters enjoy miles of paved trails over abandoned railbeds through wooded areas. Springfield has more than 20 parks, three bike trails and multiple golf courses. The new Southwind Park, expected to open in the summer of 2009, is a community supported park for patrons with both abilities and disabilities.

Lake Springfield, with its 60 miles of shoreline, provides boating, fishing, swimming and other opportunities for water sports. Located near the lake, Lincoln Memorial Garden and Henson Robinson Zoo both offer a number of seasonal nature programs and special events.

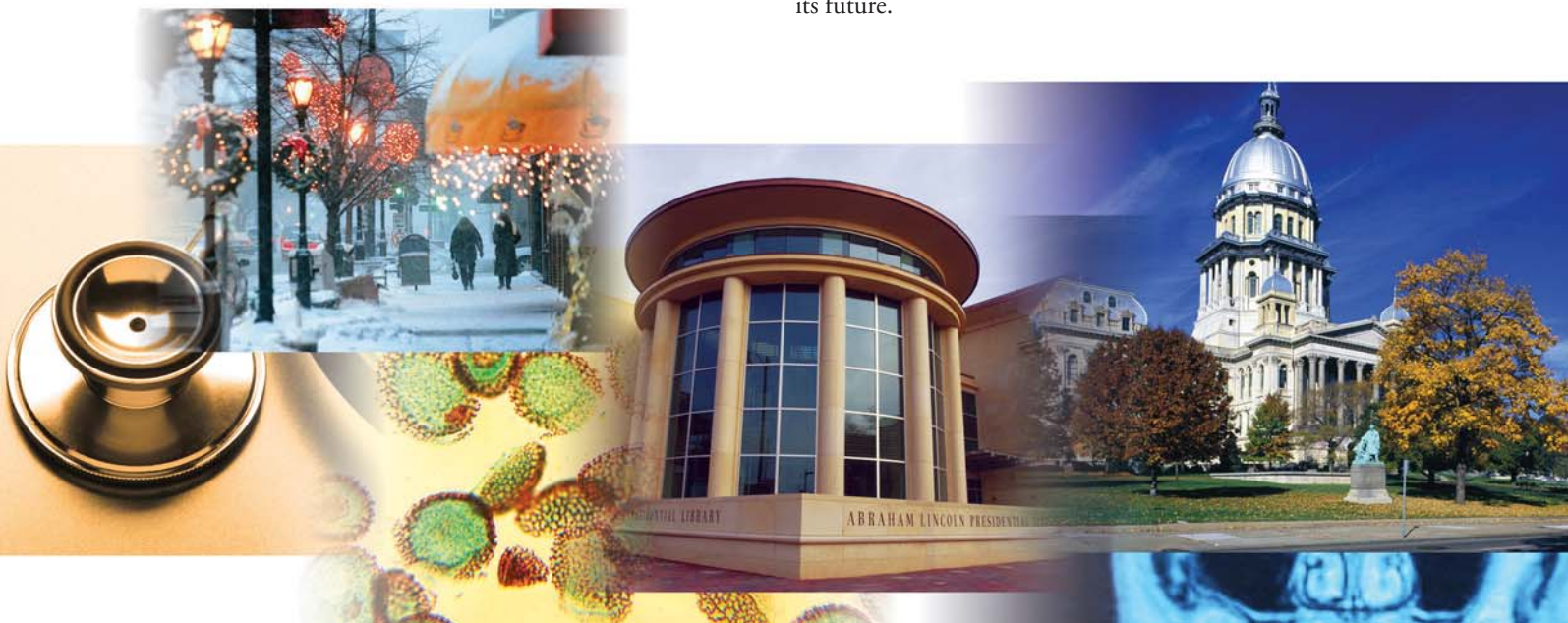
Educational opportunities are abundant in Springfield. Springfield College in Illinois, a Benedictine University partner, offers associate degrees in liberal arts, sciences, teacher education and art, six bachelor's degree programs and four masters. Lincoln Land Community College offers more than 100 associate degree programs. UIS offers 20 bachelor's, 18 master's and one doctoral degree program, emphasizing studies in political and public affairs, business and management, and health. Robert Morris College offers associate degrees, five bachelor's and four masters.

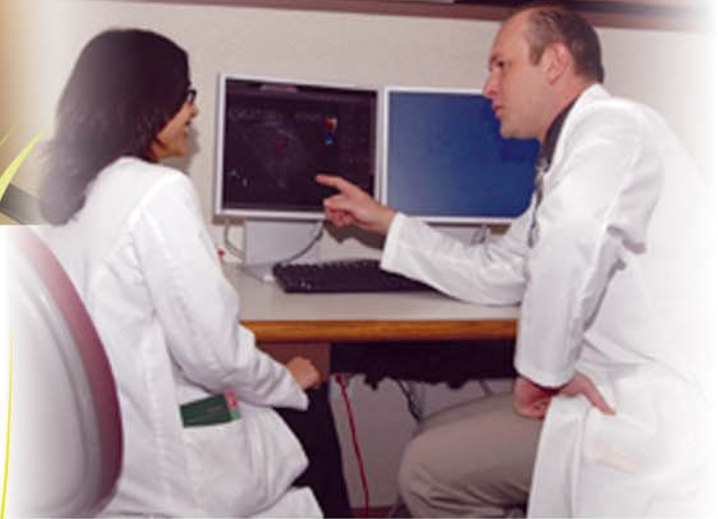
The Springfield Public School District #186 is a strong system that includes a comprehensive special education program, a modern cooperative vocational training center and a gifted magnet elementary school. The area also has parochial schools.

Springfield shopping offers something for everyone. White Oaks Mall has a variety of stores. The city also has smaller shopping malls, interesting specialty shops and antique stores.

Springfield has a relatively low cost of living, making salaries more competitive. Affordable single-family dwellings and apartments are located throughout residential neighborhoods, many near parks. Springfield's location provides easy access to major metropolitan areas — Chicago (3 hours by car, 45 minutes by plane) and St. Louis (90 minutes by car, 30 minutes by plane).

Springfield is diverse, proud of its past and confident of its future.





Southern Illinois University School of Medicine Residency Programs

To learn more about residency programs at
SIU School of Medicine, you can write:

Office of Residency Affairs
Southern Illinois University School of Medicine
P.O. Box 19656
Springfield, IL 62794-9656

If you prefer, contact Residency Affairs at 217-545-8853
between 8 a.m. and 4:30 p.m. (CT) weekdays or via email at
residency@siumed.edu.

Visit SIU on the Internet at www.siumed.edu

Published for the residency and fellowship programs by the offices of Residency Affairs and of Public Affairs
Editors: Merle E. Shiffman and Nancy S. Zimmers, Public Affairs
Editorial assistance: Debi Santini, Residency Affairs

Photography: James Hawker and Michael Meyer; Springfield photos courtesy of the Springfield Convention and Visitors Bureau

Southern Illinois University is an Equal Opportunity/Affirmative Action institution in accordance with Civil Rights legislation and doesn't discriminate on the basis of race, color, religion, national origin, sex, sexual orientation, marital status, age, disability or veteran status in any of its educational program, activities, admissions or employment practices. Concern regarding this policy should be referred to the Affirmative Action Office, Southern Illinois University Davies Hall, Room 155, mail code 4306, or telephone 618-536-6618 or the Affirmative Action Coordinator, SIU School of Medicine, 327 W. Calhoun, mail code 9601, Springfield, or telephone 217-545-5646.