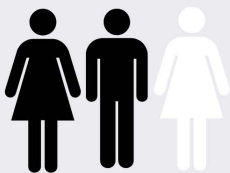


Disparities in aging

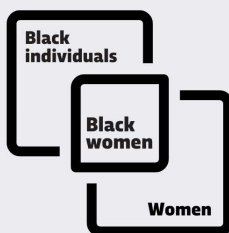


Improving dementia care and access is crucial for Black women age 65 and older, who are at a disproportionately high risk for Alzheimer's disease (AD).



Black individuals are at **2x to 3x** greater risk to develop AD than white individuals

And women are twice as likely as men to develop AD,



making Black women particularly vulnerable.

Worsening the problem are **barriers**



to high-quality healthcare. 80 percent of Black individuals report at least one barrier to quality care.

Despite an increased risk, Black patients are

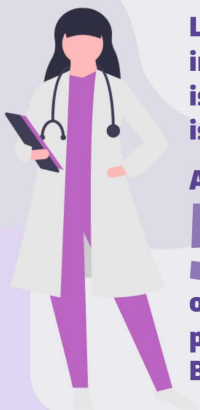
35%

less likely to receive a dementia diagnosis.



Lack of inclusion in clinical trials is a significant issue.

As few as **5%** of clinical trial participants are Black.



Read the article in **Frontiers in Aging Neuroscience** by scanning the QR code above.