

YEAR FOUR ORIENTATION

WELCOME
Class of 2021



SIU MEDICINE
FORWARD. FOR YOU.

PURPOSE OF THE 4TH YEAR



- Explore your interests
- Strengthen your knowledge, clinical skills and clinical reasoning
- Prepare for residency
- Broaden your education



OUTLINE

- 30 weeks of elective credit
- 4 week Intensive Clinical Experience
 - **Additional ICE** may be required of deferral students
- 4 weeks Basic Science Electives
- Electives in 3 clinical areas
- Doctoring Year 4
- Y4 Geriatrics
- Doctoring Mentoring Activities
- USMLE Step 2 (CK and CS)
- Residency Applications / Interviews





THE RULES!





- **NO INTERVIEWING DURING
MED HUM / Doctoring Week**

- **SCHEDULE INTERVIEWS FOR
VACATION TIME (14 wks)...**

**Interview Time Off requests are not guaranteed in
an elective; if it can be granted you will be
required to make up the time of absence.**



Time Requirements in Y4

- 46.0 weeks = Time available in Y4
- 30.0 weeks = Required Elective Credit
(20 On-Campus Credit)
- 1.0 week = Required MED HUM / Doc Clerkship

15 weeks = Open Time



PITFALLS TO AVOID

- **Prerequisites:**

- Notify faculty “X” weeks before
- “Successful completion of
- Not checking these things and following through may cause you last minute changes

- **Absences / Time Off:**

- Communicate! If you need time off or have an unplanned absence for an elective, discuss with **faculty** far in advance, come with a plan to make it up.
- No absence line in Y4, work with course faculty and staff directly.
- Holidays – Are at the discretion of the faculty.

PITFALLS TO AVOID



- Retake elective only with permission / No waiting list
- Graduation Requirements
- Evaluations: no credit until done

- **YOUR RESPONSIBILITY!**
- 

PITFALLS TO AVOID

- Satisfactory with decreased weeks of credit
- Incomplete (must be completed before April—or converts to Unsatisfactory)
- Unsatisfactory-stays on transcript and triggers review by most medical licensing boards (ie. delays licensure for residency and practice each time you apply!)

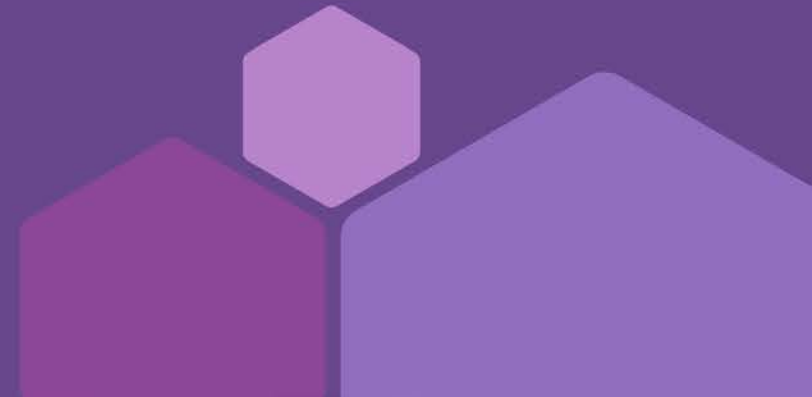


**• PLAN TO TAKE CPR/BLS AND
POSSIBLY ACLS BEFORE YOU
START RESIDENCY –**

• SIUSOM Usually will offer sessions in April




Getting Ready for Year Four



ELECTIVES



30 Weeks of Credit

- 20 Weeks - On-Campus Credit
 - 12 Weeks of “Core” Credit
 - 4 Weeks each in 3 Core Clinical Departments
 - (EM, FCM, IM, OBGYN, Neuro, Peds, Psych, & Surgery)
 - 1 (4-week rotation) – ICE* – from the list
 - Additional ICE may be required of deferral students
 - 4 Weeks of Basic Science Elective
 - **ICE CAN count toward 1 of 3 “Cores”*
- 

ELECTIVES



Vary in Length:

- Full time (1 credit for each week)
- Half-Time: AM/PM (0.5 credit for each week)
- Extended (consecutive Thursday PMs)
(1 block = 5 weeks = 0.5 credit)



ELECTIVES

- **Catalog (Traditional, ICE, or BSE)**
 - Approx. 180 electives offered
- **Individually-Designed Electives**
 - IDE -- Not in the Catalog – something YOU design
- **Extramural Electives**
 - “Away” Electives – other LCME schools
- **Travel to Foreign Countries:**
 - Electives requiring travel to foreign countries will not be added to your schedule until you have completed a required meeting with the Associate Dean for Student Affairs **AT LEAST** six weeks prior to the start date. No credit will be given if this requirement is not fulfilled by the deadline.

BEFORE YOU REGISTER.....



- Read
 - “Helpful Hints”
 - “Student Misconceptions”
- Review List of Electives:
 - Note the ones you think might be of interest
 - Read the course descriptions in the Catalog
 - Check out past Student Feedback

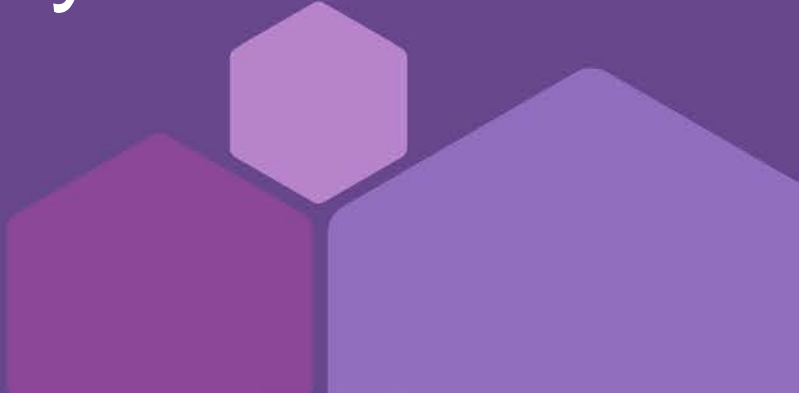


Before you Register.....

Make a list of all the electives you'd like to take

Meet with your advisor by April 17, 2020

PEP Career Advisors can be your Y4 Elective Advisors; still note on the link to whom will be your advisor in the fourth year.



PATHWAYS

- FCM, IM, OB/GYN, Pathology, PEDS, PSYCH
- Community Outreach and Education
- Surgery: Ortho, General, Plastic, ENT
- 12 weeks (non-consecutive)
 - 4 ICE; 4 basic science; 4 elective

REGISTRATION PROCESS





- **Complete Registration Online**

1. Registration for your **Top 3** elective choices will open at 3pm on **April 24** and close at 8am on April 27.
2. Registration for ALL remaining electives will open at 5pm on **May 1** and close at 8am on May 4.



IMPORTANT DEADLINES



April 17:

- Deadline for students to have met with their advisor

April 24 (3pm):

- Registration opens for selection of Top 3 Elective choices

Important Deadlines



May 1 (5pm):

Registration opens for all remaining elective choices

May 8:

Student Schedules will be available online
Open Enrollment Ends

IMPORTANT DEADLINES (THROUGHOUT THE YEAR)

- **Add/Drop: 1 week before start date**
- **IDE: 3 weeks in advance of start date**
- **Extramural: 3 weeks in advance of start date**



(this is in addition to applying on VSLO)

Note: Be sure to have paperwork completed and necessary signatures

(Forms available on website or outside Cherie's office)

BE SURE TO.....

- Check your student mailbox every 2-3 days when in town.
- Check email daily – here or away
- You are responsible for information sent via email.

BE SURE TO.....

- Read and follow the Year Four
- Policies & Procedures
- **All forms & pertinent documents online**
 - Y4 Webpage Class 2021





Contact

- **Haneme Idrizi, MD – Y4 Curriculum Director**
- **Chris Reavis – Y4 Curriculum Coordinator**
- **Cherie Forsyth – Registrar**
- **Melissa Buchanan / Jason Arnold – OEC Webmaster**



QUESTIONS

